



ORIGINAL ARTICLE

Epidemiological indicators and predictors of lethality associated with fungal infections in a NICU: a historical series



Ralciane de Paula Menezes ^{a,*}, Isadora Caixeta da Silveira Ferreira ^b,
Mallu Santos Mendonça Lopes ^c, Thiago Alves de Jesus ^c, Lúcio Borges de Araújo ^d,
Reginaldo dos Santos Pedroso ^a, Denise Von Dolinger de Brito Röder ^e

^a Universidade Federal de Uberlândia, Curso Técnico em Análises Clínicas, Escola Técnica de Saúde, Uberlândia, MG, Brazil

^b Universidade Federal de Uberlândia, Programa de Pós-Graduação em Ciências da Saúde, Faculdade de Medicina, Uberlândia, MG, Brazil

^c Universidade Federal de Uberlândia, Curso de Biomedicina, Instituto de Ciências Biomédicas, Uberlândia, MG, Brazil

^d Universidade Federal de Uberlândia, Faculdade de Matemática, Uberlândia, MG, Brazil

^e Universidade Federal de Uberlândia, Departamento de Microbiologia, Instituto de Ciências Biomédicas, Uberlândia, MG, Brazil

Received 7 August 2023; accepted 8 November 2023

Available online 22 December 2023

KEYWORDS

Candida spp.;
Epidemiological surveillance;
Invasive fungal infections;
Neonates

Abstract

Objectives: Fungal infections (FI) pose a public health concern and significantly increase mortality rates, especially within Neonatal Intensive Care Units (NICU). Thus, this study aimed to investigate epidemiological indicators, risk factors, and lethality predictors associated with FI in a NICU.

Methods: This study included 1,510 neonates admitted to the NICU of a reference hospital in Brazil between 2015 and 2022. Demographic data, such as sex, birth weight, gestational age, and use of invasive devices were analyzed.

Results: Thirty neonates developed invasive FI, totaling 33 episodes and an incidence of 1.2 per 1,000 patient days. *Candida albicans* was the most frequent species (52.9 %), the bloodstream was the most affected site (78.9 %), and 72.7 % of infections occurred between 2015 and 2018. The lethality rate associated with FI was 33.3 %, and 90 % of deaths occurred within 30 days of diagnosis of infection. Weight < 750 g, prolonged hospital stay, use of parenteral nutrition, and broad-spectrum antimicrobials were independent risk factors for infection occurrence, especially glycopeptides and 4th generation cephalosporins, having a considerable role in the increase in fungal infections. Weight < 750 g was considered a significant predictor of lethality, and *C. albicans* had the highest lethality rate (40 %).

* Corresponding author.

E-mail: ralciane@ufu.br (R.P. Menezes).

Conclusion: These findings highlight the elevated lethality rate associated with these infections, reinforcing the importance of developing strategies to control FI within NICU.

© 2023 Published by Elsevier Editora Ltda. on behalf of Sociedade Brasileira de Pediatria. This is an open access article under the CC BY-NC-ND license (<http://creativecommons.org/licenses/by-nc-nd/4.0/>).

Introduction

Invasive fungal infections (IFI) constitute a public health concern worldwide due to their impact on prolonged hospitalization, increased morbidity and mortality rates, and substantial escalation of hospital costs.¹ This situation is even more alarming when it affects critically ill patients admitted to Neonatal Intensive Care Units (NICU), as their vulnerability significantly reduces their chances of survival.^{1,2} In recent years, there has been a considerable rise in IFI cases in the NICU, especially among premature infants. This susceptibility can be attributed to inherent factors such as extremely low weight, immune system immaturity, and compromised natural barriers like the skin and gastrointestinal tract.^{3,4} Additionally, extrinsic factors associated with the hospital environment, including the use of invasive devices and the prophylactic or therapeutic administration of extended-spectrum antimicrobials, contribute to the increase in these infections.¹⁻⁴ The range of etiological agents causing IFI in NICU is extensive, encompassing rare fungi such as *Trichosporon* spp.⁵ However, *Candida* spp. is the most prevalent and the fourth main cause of healthcare-associated infections (HAIs) in some NICU.^{2,6}

In developed countries like Canada, the incidence of invasive candidiasis in the pediatric population is 5.1 cases per 1,000 admissions to pediatric units.⁷ In Europe, 36.4 % of invasive candidiasis cases occur in the NICU, with a 30-day mortality rate of 18.2 %.⁸ In developing countries, the incidence reaches 22 %.⁹ In Brazil, the incidence and mortality rates of invasive candidiasis in the NICU are 10.97 % and 20.4 %, respectively.¹⁰

Although *Candida albicans* is still the most frequent species in some countries,^{1,8} recent studies have highlighted a growing incidence of cases caused by non-*albicans* species, including *Candida lusitanae*, *Candida guilliermondii* and *Candida auris*.^{1,9,10} This trend raises concerns, as these species tend to be more resistant to antifungals, posing challenges in managing infections.^{8,9}

Understanding the epidemiology, IFI-associated risk factors, and their predictors of mortality is crucial for guiding treatment, enhancing neonatal care, and reducing morbidity and mortality rates. Therefore, this study aimed to investigate the epidemiological indicators, risk factors, and lethality predictors associated with IFI in a NICU.

Patients and methods

Type and place of study

This analytical retrospective cohort study was conducted in the NICU of a reference university hospital in the southeastern region of Brazil. The neonatal unit comprises 42 beds, 20 beds for intensive care, 16 for semi-intensive care, and six for intermediate care in the “Kangaroo Care” model.

Patients

This study included neonates admitted to the NICU for more than 24 h between January 1st, 2015, and June 30, 2022. The control group consisted of patients who did not exhibit any type of infection or colonization. Neonates who had at least one laboratory-confirmed IFI episode were included in the study group. Neonates with solely bacterial infection or non-invasive fungal infection were excluded. Data collection occurred daily, from admission to the outcome, using the National Healthcare Safety Network (NHSN) system model.¹¹

Information such as biological sex, birth weight, gestational age (GA), type of delivery, and indication for hospitalization were analyzed. The use of invasive devices, broad-spectrum antimicrobials, prior antifungals, and antifungal therapy for treatment were also evaluated.

Regarding IFI, factors such as the duration of previous hospitalization, prior bacterial infection, isolated fungal species, affected site, and clinical progression of the neonate were considered.

Only the initial episode of infection was considered to analyze predictors of mortality associated with IFI and calculate mortality rates.

Epidemiological indicators, risk factors and lethality predictors

IFI rates were presented as incidence density (ID-patient-days) and calculated as previously described.^{6,12} Risk factors for developing fungal infections and mortality were assessed by univariate and multivariate logistic regression, followed by variable selection using the stepwise method. Survival and cumulative probability curves were constructed using the Kaplan-Meier method. *P*-values ≤ 0.05 were considered statistically significant. The endemic level of infections and the lethality rate associated with IFI were calculated according to Arantes et al. and the Centers for Disease Control and Prevention (CDC), respectively.^{13,14}

Research ethics

This study was approved by the Ethics Committee for Research with Human Beings of the Federal University of Uberlandia (number 2.173.884; CAAE 68404017.1.0000.5152/2017).

Results

Characterization of the population

A total of 1,510 non-repeat neonates were considered eligible for the study, totaling 24,438 patient days. Most neonates were male (55.6 %), premature (40 %), and underweight (40.1 %), with a mean birth weight of 2,090.12 g (range: 345–5,015 g). Issues in the respiratory system

constituted the primary indication for NICU admission (52.8 %), and the average length of stay in the unit was 16.18 days (range: 2–130 days). The year with the highest number of admissions was 2019, with 252 neonates (16.7 %). However, it was in 2017 that the authors observed the admission of the most significant number of critically ill neonates to the NICU, accounting for 19.2 % of those with extremely low birth weight and 17.4 % of those with GA < 28 weeks. Furthermore, 22.3 % of deaths occurred in 2017. Supplemental Table 1 presents the characterization of the population included in the study in each year.

Thirty neonates (2 %) had at least one episode of IFI, of which 56.7 % were extremely premature, and 43.3 % had a birth weight < 750 g. Of these patients, 83.3 % were admitted to the NICU due to low birth weight, and 20 % were transferred from other hospitals to the referred unit due to the severity of their health status. Invasive device use, such as umbilical venous catheter (UVC), mechanical ventilation, and parenteral nutrition (PN), was significantly higher among patients with IFI, increasing the risk of infection by up to 24.02 times (PN). Moreover, pre-emptive prescription of antifungals, especially those belonging to the azole class, was more prevalent among newborns with fungal infections (36.7 %) (Supplemental Table 1 and Table 1).

In this study, fluconazole was the first-choice antifungal treatment for 93.3 % (28 patients) of IFI cases. In 7.1 % of cases, fluconazole was prescribed in association with micafungin (one patient) or amphotericin B (one patient). However, in 14.3 % (4 patients) and 3.6 % (1 patient) of cases, fluconazole was replaced by micafungin and amphotericin B, respectively. On average, these replacements occurred after 6.4 days of fluconazole use. Additionally, 66.7 % of amphotericin B or micafungin prescriptions occurred between 2018 and 2022. Among the nine neonates who used these antifungals for IFI treatment, eight (88.9 %) had extremely low birth weight, and six (66.7 %) were discharged.

Epidemiological indicators

The study examined several epidemiological indicators, as presented in Table 2. The fungal infection rate during the study period was 1.9 %, with an ID of 1.2 per 1,000 patient days. The highest densities were observed in 2016 and 2017 (4.1 and 2.5 per 1,000 patient days, respectively). There was an upward trend in IFI cases in the second half of 2015, reaching a peak in March 2016, when it exceeded the pre-established upper control limit. In 2017, the IFI density remained above the average for the period but within the pre-established upper alert limit (Supplemental Figure 1). Between 2018 and 2022, infection rates decreased, reaching the lowest value in 2020 (0.2 per 1,000 patient days).

There were 33 episodes of IFI in 30 neonates, totaling 34 isolates. The bloodstream was the most affected site (26–78.8 % - incidence: 1.0 per 1,000 patient days). *C. albicans* was the predominant species (18–53 % - incidence: 0.6 per 1,000 patient-days), and it was isolated in more than one site in three neonates (2015: bloodstream and central nervous system [cerebrospinal fluid]; 2016: bloodstream and urinary tract; 2021: urinary tract and ascitic fluid). Furthermore, in 2016, one neonate had mixed candidemia caused by *C. albicans* and *C. parapsilosis*.

Risk factors for fungal infections

Several factors were considered independent risk conditions for IFI, with emphasis on weight < 750 g [P : 0.0028; OR: 5.12 (1.75 - 14.95)]; previous use of some classes of broad-spectrum antimicrobials, such as aminoglycosides [P : 0.0479; OR: 3.41(1.01 - 11.49)], 4th generation cephalosporins [P : 0.0028; OR: 20.1(2.81 - 144.08)] and glycopeptides [P : 0.0003; OR: 1.21(1.09 - 1.33)]; and PN [P : 0.0047; OR: 27.19(2.76 - 268.22)] (Table 1).

Figure 1 Displays the cumulative probability of developing fungal infection based on the duration of antimicrobial use in two time periods: 2015–2018 and 2019–2022. Between 2015 and 2018 (the period with the highest incidence of fungal infections) antimicrobials were significantly more used and increased the chances of IFI to up to 50 % after 20 days of use. When evaluating the cumulative probability by antimicrobial classes, the prescription of glycopeptides and 4th generation cephalosporins between 2015 and 2018 significantly increased the risk of IFI occurrence to 40 % after ten days of use (P : 0.0232 and P : 0.0018).

Lethality predictors and their indicators

All IFI-associated deaths occurred between 2015 and 2018. The overall mortality rate of the study population was 9.2 %, while the mortality associated with IFI in the general population was 0.7 %. Statistical analysis revealed a higher mortality rate in the fungal infection group [P < 0.001; OR 5.24 (2.4 - 11.43)]. Furthermore, the lethality rate of IFI was 33.3 % (10 newborns), reaching 50 % in 2015, 2016, and 2017.

Of the total number of deaths associated with IFI, nine (90 %) occurred within 30 days after diagnosis of infection, with an average time of 15.2 days. Among the newborns affected by IFI and died, 70 % were male, extremely premature, and weighed less than 750 g. Low birth weight was the only significant risk factor for mortality (P : 0.0449; OR: 5.44).

Additionally, five of the ten neonates who died had a prior bacterial infection before the IFI, occurring on average 8.4 days earlier. All neonates who died had a fungal bloodstream infection, with one case being a mixed infection of *C. albicans* and *C. parapsilosis*. Another neonate had an episode of invasive candidiasis in the cerebrospinal fluid in addition to the bloodstream infection.

C. albicans had the highest lethality rate in all years of the study (40 %), especially in 2017 when the lethality rate reached 75 % (Table 2, Figure 2). Although no statistical difference was found in the survival of patients according to the species of *Candida*, newborns affected by *C. albicans* had the chances of survival reduced by up to 50 % in the first 30 days of hospitalization (Figure 2). Moreover, they had a 2.25 times higher risk of death (data not shown).

Discussion

Fungal HAs occurrence has increased worldwide, especially those caused by *Candida* spp.¹⁵. However, few studies highlighted the epidemiology of IFI in neonatal units.

Table 1 Risk factors associated with invasive fungal infections in the NICU at HC-UFU between January 2015 and June 2022.

Variables	Total		Control		Infected		Univariate analysis		Multivariate analysis	
	N	%	N	%	N	%	OR (95 % CI)	P value	OR (95 % CI)	P value
Neonates	1,510	100	1,480	100	30	100	–	–	–	–
Biological sex										
Male	839	55.6	816	55.1	23	76.7	–	–	–	–
Female	671	44.4	664	44.9	7	23.3	0.37 (0.16 - 0.88)	0.0237	–	–
Birth weight (g)										
<750	85	5.6	72	4.8	13	43.3	14.95 (6.99 - 31.98)	<0.0001*	5.12 (1.75 - 14.95)	0.0028**
750–999	97	6.4	93	6.3	4	13.3	2.29 (0.78 - 6.71)	0.1294	–	–
1,000–1,499	229	15.2	221	14.9	8	26.7	2.07 (0.91 - 4.71)	0.0823	–	–
1,500–2,499	606	40.1	605	41.0	1	3.3	0.05 (0.01 - 0.37)	0.0032	0.01 (0 - 0.22)	0.0043
≥2,500	493	32.7	489	33.0	4	13.3	0.31 (0.11 - 0.9)	0.0309	0.09 (0.01 - 1)	0.0496
Mean ± SD	2,090.12 ± 905.21	2,108.01 (±897.30)	1,185.2 (±842.97)	–	–	–	–	–	–	–
Gestational age (weeks)										
<28	144	10.0	127	9.0	17	56.7	13.18 (6.26 - 27.76)	<0.0001*	–	–
28–31	277	19.3	269	19.2	8	26.7	1.54 (0.68 - 3.49)	0.3033	–	–
32–36	604	42.0	603	42.8	1	3.3	0.05 (0.01 - 0.34)	0.0025	–	–
≥37	412	28.7	408	29	4	13.3	0.38 (0.13 - 1.09)	0.0708	–	–
Mode of delivery										
Caesarean section	1,110	76.3	1,095	76.9	15	50	0.3 (0.15 - 0.62)	0.0012	–	–
Vaginal	344	23.7	329	23.1	15	50	–	–	–	–
Primary reason for NICU admission										
Low birth weight (<1,500 g)	411	27.2	386	26.0	25	83.3	14.17 (5.39 - 37.28)	<0.0001*	21.99 (1.31 - 369.45)	0.0318
Respiratory	798	52.8	795	53.8	3	10	0.1 (0.03 - 0.32)	0.0001	–	–
Cardiovascular	141	9.3	141	9.5	0	0	1 (-)	0.9861	–	–
Gastrointestinal	73	4.9	72	4.8	1	3.3	0.67 (0.09 - 5.01)	0.7003	–	–
Neurological	80	5.3	79	5.3	1	3.3	0.61 (0.08 - 4.55)	0.6309	–	–
Genitourinary	7	0.5	7	0.6	0	0	1 (-)	0.9889	–	–
Refer from another hospital	146	9.7	140	9.4	6	20	2.39 (0.96 - 5.95)	0.0606	–	–
Length of stay in NICU, mean (SD)	16.18 ± 16.86	15.37 (±15.28)	55.1 (±34.43)	1.06 (1.04 - 1.07)	<0.0001*	1.04 (1.02 - 1.05)	0.0000*	–	–	–
Antibiotic use prior to fungal infection	636	42.1	606	41.0	30	100	20.08 (4.77 - 84.57)	<0.0001*	–	–
Mean (SD)	8.33 ± 7.84	3.29 (±6.21)	14.65 (±11.69)	1.09 (1.07 - 1.12)	<0.0001*	–	–	–	–	–
Aminoglycosides	491	32.5	466	75.6	25	83.3	10.88 (4.14 - 28.6)	<0.0001*	3.41 (1.01 - 11.49)	0.0479**
Mean (SD)	5.98 ± 3.89	5.85 (±3.75)	8.48 (±5.50)	1.21 (1.14 - 1.28)	<0.0001*	–	–	–	–	–
Penicillins	566	37.5	541	8	25	83.3	8.68 (3.3 - 22.8)	<0.0001*	–	–
Mean (SD)	7.33 ± 5.85	7.11 (±5.60)	12.28 (±8.38)	1.12 (1.08 - 1.16)	<0.0001*	–	–	–	–	–
Carbapenems	5	0.33	2	0.1	3	10	82.11 (13.18 - 511.47)	<0.0001*	–	–
Mean (SD)	7.2 ± 4.96	3.5 (±0.71)	9.67 (±5.13)	2.51 (1.32 - 4.75)	0.0048*	–	–	–	–	–
1st-generation cephalosporins	62	4.1	59	4.0	3	10	2.68 (0.79 - 9.07)	0.1140	–	–

Table 1 (Continued)

Variables	Total		Control		Infected		Univariate analysis		Multivariate analysis	
	N	%	N	%	N	%	OR (95 % CI)	P value	OR (95 % CI)	P value
Mean (SD)	5.17 ± 6.72	5.07 (±6.85)	7.33 (±3.05)	1.07 (0.98 - 1.17)	0.1461	—	—	—	—	—
3rd-generation cephalosporins	85	5.6	78	5.26	7	23.3	5.47 (2.28 - 13.14)	0.0001*	—	—
Mean (SD)	7.14 ± 5.77	7.03 (±5.32)	8.71 (±9.01)	1.12 (1.04 - 1.2)	0.0013*	—	—	—	—	—
4th-generation cephalosporins	45	3.0	37	2.50	8	26.7	14.18 (5.93 - 33.94)	<0.0001*	20.1 (2.81 - 144.08)	0.0028**
Mean (SD)	7.93 ± 7.04	8.51 (±7.53)	5.25 (±3.28)	1.1 (1.02 - 1.19)	0.0161*	0.69 (0.52 - 0.91)	0.0099	—	—	—
Glycopeptides	54	3.6	41	2.76	13	43.3	26.84 (12.23 - 58.9)	<0.0001*	1.21 (1.09 - 1.33)	0.0003**
Mean (SD)	9.27 ± 8.24	9.76 (±8.88)	7.77 (±5.86)	1.13 (1.07 - 1.2)	<0.0001*	0.17 (0.05 - 0.6)	0.0057	—	—	—
UVC prior to fungal infection	443	29.3	425	28.66	18	60	3.72 (1.78 - 7.8)	0.0005*	—	—
Mean (SD)	4.26 ± 2.74	4.22 (±2.72)	5.33 (±3.18)	1.22 (1.11 - 1.34)	<0.0001*	—	—	—	—	—
PICC prior to fungal infection	812	53.8	782	52.73	30	100	1 (-)	0.9868	—	—
Mean (SD)	12.37 ± 9.42	12.11 (±8.99)	19.33 (±15.99)	1.08 (1.05 - 1.1)	<0.0001*	—	—	—	—	—
Mechanical ventilation prior to fungal infection	553	36.6	527	35.54	26	86.7	11.75 (4.08 - 33.86)	<0.0001*	—	—
Mean (SD)	7.96 ± 11.33	7.34 (±10.34)	20.54 (±20.35)	1.07 (1.04 - 1.09)	<0.0001*	—	—	—	—	—
PN prior to fungal infection	573	38	545	36.75	28	93.3	24.02 (5.7 - 101.16)	<0.0001*	27.19 (2.76 - 268.22)	0.0047**
Mean (SD)	11.53 ± 7.61	11.20 (±6.91)	17.96 (±14.95)	1.11 (1.08 - 1.15)	<0.0001*	—	—	—	—	—
Previous antifungal treatment before fungal infection	35	2.32	24	1.62	11	36.7	8.00 (15.09 - 81.77)	<0.0001*	—	—
Mean (SD)	6.82 ± 3.39	7.0 (±3.20)	6.45 (±3.91)	0.72 (0.59 - 0.86)	0.0005	—	—	—	—	—
Azoles	33	2.19	22	1.49	11	36.7	38.37 (16.34 - 90.10)	<0.0001*	44.17 (5.19 - 376.12)	0.0005**
Mean (SD)	6.45 ± 2.94	6.7 (±2.77)	6.18 (±3.40)	1.52 (1.34 - 1.72)	<0.0001*	0.68 (0.51 - 0.91)	0.0100	—	—	—
Micafungin	2	0.13	1	0.74	1	3.3	51 (3.11 - 835.38)	0.0058	—	—
Mean (SD)	7.5 ± 4.94	11 (±0)	4 (±0)	1.34 (0.93 - 1.95)	0.1184	—	—	—	—	—

Note: CI, confidential intervals; OR, odds ratio; PICC, peripherally inserted central catheter; PN, parenteral nutrition; SD, standard deviation; UVC, umbilical venous catheter; * and ** *P* statistically significant. There was no information on the gestational age and type of delivery of 73 and 56 neonates in the control group, respectively.

Table 2 Epidemiological indicators of invasive fungal infections that occurred in the study population of the NICU at HC-UFU between January 2015 and June 2022.

Indicators	Years								
	2015	2016	2017	2018	2019	2020	2021	2022	All period
Neonates with invasive fungal infection	2	8	8	4	2	1	4	1	30
Episodes of invasive fungal infection	3	9	8	4	2	1	5	1	33
<i>C. albicans</i> infection	2	6	4	2	1	–	3	–	18
<i>C. parapsilosis</i> infection	–	3	3	1	1	1	1	1	11
Infection by other fungal species*	1	1	1	1	–	–	1	–	5
Invasive fungal infection rate	1.5 %	7.0 %	4.2 %	1.9 %	0.7 %	0.4 %	1.5 %	0.7 %	1.9 %
Fungal infection per 1,000 patient-days	0.9	4.1	2.5	1.0	0.4	0.2	1.0	0.4	1.2
Bloodstream infection per 1,000 patient-days	0.9	4.2	2.5	1.0	0.2	0.2	0.2	0.4	1.0
Urinary tract infection per 1,000 patient-days	–	0.4	–	–	0.2	–	0.5	–	0.1
Nervous system infection per 1,000 patient-days	0.4	–	–	–	–	–	0.2	–	0.1
<i>C. albicans</i> infection per 1,000 patient-days	0.4	2.4	1.2	0.5	0.2	–	0.5	–	0.6
<i>C. parapsilosis</i> infection per 1,000 patient-days	–	1.6	0.9	0.2	0.2	0.2	0.2	0.4	0.4
Infection by other fungal species per 1,000 patient-days*	0.4	0.5	0.3	0.2	–	–	0.2	–	0.2
Lethality rate associated with invasive fungal infection	50 %	50 %	50 %	25 %	–	–	–	–	33.3 %
Lethality rate of <i>C. albicans</i> infections	100 %	40 %	75 %	–	–	–	–	–	40 %
Lethality rate of <i>C. parapsilosis</i> infections	–	66.6 %	–	100 %	–	–	–	–	27.2 %
Lethality rate of infections caused by other fungal species*	–	100 %	100 %	–	–	–	–	–	40 %

Note: * *Trichosporon* sp. (2015); *C. guilliermondii* (2016); *C. lusitaniae* (2017); *C. glabrata* (2018); *C. tropicalis* (2021).

In this historical series, the incidence of IFI was 1.2 per 1,000 patient days, lower than the rates reported in NICU in countries like Canada,⁷ the USA,¹⁶ and Taiwan,¹⁷ where the incidence ranged from 1.97 to 5.1 per 1,000 patient days. This difference may be related to the profile of neonates admitted to each unit, the level of care provided in the NICU, the clinical practices of the healthcare team, treatment protocols, and geographic differences.¹⁰ However, the authors observed an oscillation in the IFI rate throughout the study, in which the year 2016 had the highest rate (4.1 per 1,000 patient days) and 2020 had the lowest rate (0.2 per 1,000 patient days).

The higher occurrence of IFI in the initial years of the study (2015 to 2018) may be attributed to the extensive administration of broad-spectrum antimicrobials in newborns admitted to the unit, especially glycopeptides and cephalosporins, in preceding years (2012 to 2014), in order to reduce the occurrence of late-onset sepsis.¹⁸ Similarly, from 2015 to 2018, glycopeptides and 4th generation cephalosporins were more used, significantly increasing the chances of IFI occurrence by up to 50 % (Figure 1). The administration of broad-spectrum antimicrobials is the main risk factor for fungal infections in neonates, especially among those with extremely low birth weight.¹⁹

The reduction in the occurrence of fungal HAIs in the second period of the study (2018–2022), especially in 2020, could be related to improvements in the management of patients by the multidisciplinary team over time. This improvement was achieved through an interventionist action based on the Plan-Do-Study-Act (PDSA), which aimed to detect the points that needed improvement to enhance cohesion among the team's professionals and in the execution of procedures performed on neonates. This intervention emphasized the importance of training and implementing actions to improve service quality. Additionally, the classes of antimicrobials used as empirical therapy for bacterial infections changed during this period, when the use of aminoglycosides and penicillins was predominant.

A similar study in a pediatric ICU in Canada also observed fluctuations in IFI incidence rates over the 11 years of surveillance.⁷ Other studies conducted in Greece and the USA reported significant reductions in the incidence rates of IFI, attributing them to improved patient management, rational use of antimicrobials, and implementation of a protocol for prophylactic use of antifungals high-risk neonates.^{16,20} These justifications align with the actions taken at the NICU of the hospital, which culminated in the reduction in fungal infections in 2020.

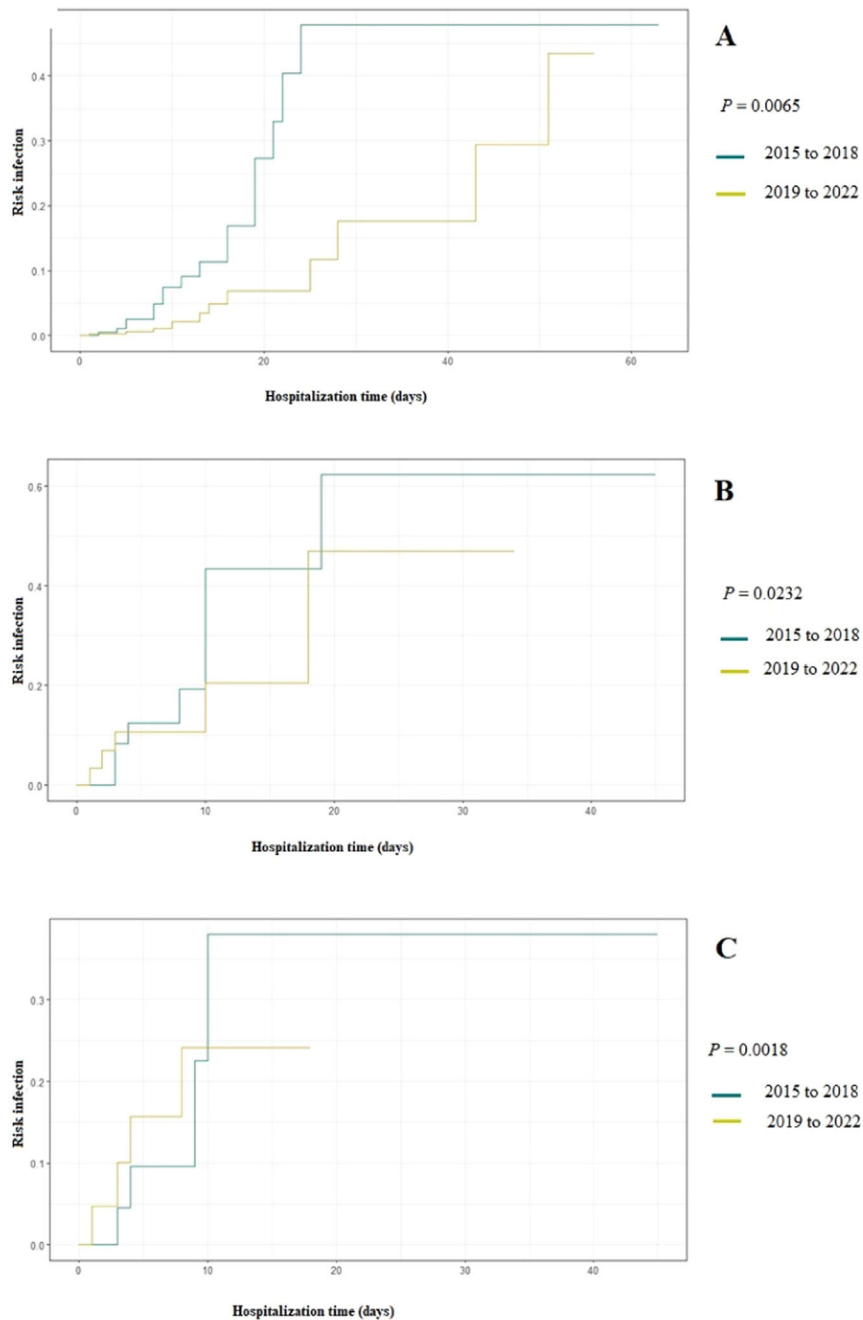


Figure 1 Cumulative probability of developing invasive fungal infection and overall antimicrobial use (A), glycopeptides (B) and 4th generation cephalosporins (C).

Most of the affected neonates were extremely premature (56.7 %) and had very low birth weight (83.3 %). Due to the severity of their conditions, all newborns used at least one invasive device, with a peripherally inserted central catheter (PICC), PN, and mechanical ventilation being the most frequent. The literature supports that these are the main risk factors for IFI.^{9,10,21} Prematurity and extremely low birth weight are inherent conditions in neonates that increase the likelihood of fungal HAIs by up to 10 times.²¹ The invasive device use can facilitate the introduction of fungal cells, especially *Candida* spp., which, coupled with the microorganism’s ability to form biofilms, can facilitate their dissemination and

establishment of the infectious process.²² This factor likely contributed to the high incidence of IFI associated with using devices such as PICC, UVC, and PN in 2016, the year when the highest rate of IFI.

The use of broad-spectrum antimicrobials, especially 4th generation cephalosporins and glycopeptides, increased the probability of developing fungal infections by up to 20 times. Fu et al. (2016) observed that the prophylactic use of carbapenems was the main risk factor associated with the occurrence of candidemia. Prolonged use of broad-spectrum antimicrobials can exert selective pressure on microorganisms within the hospital environment, contributing to increased infections by non-susceptible and opportunistic fungal species.²¹

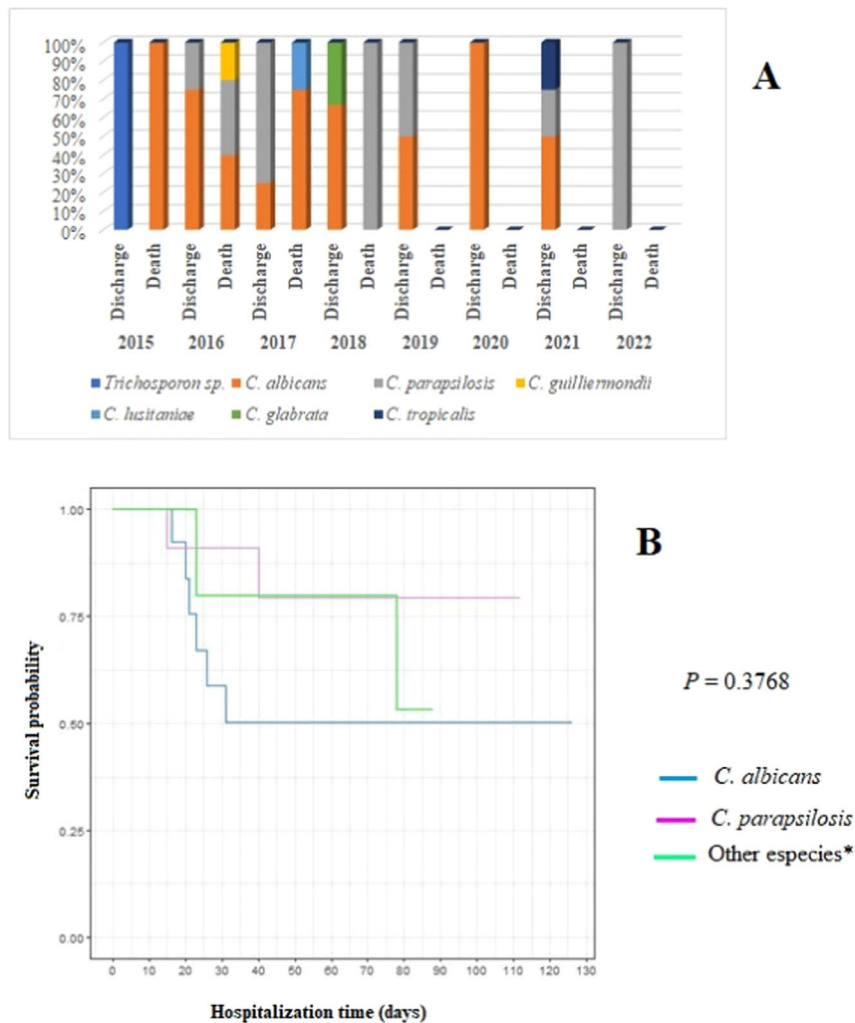


Figure 2 Distribution of fungal species in relation to patient evolution (discharge or death) by year of study (A) and survival curve using the Kaplan-Meier method for patients with *C. albicans* infection compared with those with *C. parapsilosis* and other *Candida* species (B). **Note:** *Other species: *Trichosporon sp.* (2015); *C. guilliermondii* (2016); *C. lusitanae* (2017); *C. glabrata* (2018); *C. tropicalis* (2021).

In recent decades, there has been an increase in fungal HAIs incidence, particularly those caused by *Candida* spp., with a shift in the predominant infectious agents from *C. albicans* to non-*albicans Candida* species, including in NICU.²³ Some authors suggest that this shift might result from the increased use of azole antifungals, especially fluconazole.²⁴ The present study also observed a considerable increase in IFI by non-*albicans* species when compared to previous periods.²⁵ However, *C. albicans* remained the most frequent fungal agent in the unit, responsible for the majority of IFI in six of the eight years of the study, corroborating the findings of Fu et al. (2016).²¹ On the other hand, Silva et al. (2023)¹⁰ and Cook et al. (2023)⁹ reported a predominance of non-*albicans Candida* species, particularly *C. parapsilosis* complex. Regional differences, hospital service complexity, financial resources, and the severity of the population served may explain this variation in the distribution of *Candida* species.²¹

In this series, IFI lethality rate of over 30 % is consistent with previous studies in the same hospital.²⁶ Notably, 90 % of neonates with fungal HAI who died, did so within 30 days after the infection was diagnosed, highlighting the severity

of these infections and the importance of preventive interventions. Similar studies in neonatal or pediatric units in Canada,⁷ the USA,¹⁶ Europe,⁸ India²⁷ and Turkey²⁸ reported fungal-associated lethality rates ranging between 13.7 % and 33.9 %. However, the 30-day lethality was lower than that found in this series. Differences between the populations of each study, and in the clinical management protocols among the evaluated hospital centers may explain this wide variation in mortality rates.¹⁶

Seventy percent of newborns with IFI who died had a birth weight below 750 g, which increased the probability of death by 5.44 times. However, the limited sample size in this study may have restricted the observation of other risk factors associated with mortality from fungal infections, a limitation also noted by Silva et al. (2023).¹⁰ This observation is consistent with a multicenter study that identified a strong association between mortality and birth weight below 1,000 g.⁹ However, the authors found no relationship between death and the species responsible for the infection. Although no species had a significant relationship with death in this series, *C. albicans* had a higher lethality rate, especially among newborns weighing less than 1,000 g, since

41.2 % of newborns in this weight category who died were affected by this species. Other reports have also indicated that *C. albicans* was associated with higher mortality rates compared to non-*albicans Candida* species, even within the same hospital,^{26,29} contrary to the findings of Liu et al. (2023),⁷ and Warris et al. (2020)⁸, who reported a higher lethality for non-*albicans Candida* species.

Antifungal prophylaxis with fluconazole is indicated for neonates with a birth weight below 1,000 g admitted to the NICU with a fungal infection rate of 10 %.³⁰ However, the rise of azole-resistant isolates, especially in developing countries, poses a challenge to implementing prophylactic protocols.⁹ Treatment options for IFI in the NICU include the use of amphotericin B deoxycholate or fluconazole as the first choice, with echinocandins reserved for cases involving resistant isolates or patients with contraindications or limitations related to amphotericin B toxicity.³⁰ In this study, fluconazole was the antifungal of choice for treating most IFI due to its good bioavailability and affordable cost. However, it is noteworthy that between 2018 and 2022, the prescription of micafungin or amphotericin B was higher compared to the period from 2015 to 2017, especially among neonates with extremely low birth weight. This increase in the use of broad-spectrum antifungals among more severe patients aligns with the reduction in mortality associated with IFI during the same period.

This study has limitations: data were obtained from a single health reference center, and the population affected by fungal infections was relatively small. However, studies that evaluate the temporal trends and epidemiological indicators of HAIs by fungal species in NICU over a prolonged period remain scarce, especially in Brazil. Therefore, the findings presented here contribute to expanding knowledge about the epidemiology of IFI in neonatal units worldwide, including Brazil, and can guide healthcare professionals in implementing preventive measures, particularly concerning device management and the use of broad-spectrum antimicrobials. These measures are crucial in controlling and reducing the incidence of these infections, leading to decreased neonatal morbidity and mortality rates.

Conclusion

Risk factors inherent to the neonates, such as extreme prematurity and low weight, use of invasive devices, and administration of broad-spectrum antimicrobials, were independent risk conditions for IFI in the NICU. *C. albicans* was the most prevalent fungal species in the unit and was associated with higher lethality. The mortality rate associated with IFI was high, and most deaths occurred within 30 days of diagnosis of the fungal infection.

Continuous epidemiological surveillance is crucial to effectively combat and reduce the incidence of fungal HAIs in the NICU. Regular review of patient management protocols, including the appropriate use of antimicrobials, is essential to understand the profile of affected patients and the evolving microbial epidemiological patterns over time. This knowledge enables the development of strategies to control and mitigate infections, lower mortality rates associated with IFI, and promote the rational use of antimicrobials. By implementing these measures, healthcare facilities

can enhance patient outcomes and minimize the impact of fungal HAIs in the NICU setting.

Conflicts of interest

The authors declare no conflicts of interest.

CRedit authorship contribution statement

Ralciane de Paula Menezes: Conceptualization, Data curation, Investigation, Methodology, Resources, Writing – original draft, Writing – review & editing. **Isadora Caixeta da Silveira Ferreira:** Conceptualization, Writing – original draft, Writing – review & editing. **Mallu Santos Mendonça Lopes:** Data curation, Investigation, Methodology. **Thiago Alves de Jesus:** Data curation, Investigation, Methodology. **Lúcio Borges de Araújo:** Formal analysis, Methodology, Software, Supervision, Validation. **Reginaldo dos Santos Pedroso:** Conceptualization, Writing – original draft, Writing – review & editing. **Denise Von Dolinger de Brito Röder:** Data curation, Funding acquisition, Project administration, Resources, Supervision, Writing – original draft, Writing – review & editing.

Funding

This study was financed by Fundação de Amparo à Pesquisa do Estado de Minas Gerais (FAPEMIG) - [APQ00965-18](#). Coordenação de Aperfeiçoamento de Pessoal de Nível Superior (CAPES) provided journals and scientific fellowships. Fundação de Amparo à Pesquisa do Estado de Minas Gerais (FAPEMIG) and Conselho Nacional de Desenvolvimento Científico e Tecnológico (CNPq) provided undergraduate research scholarships.

Supplementary materials

Supplementary material associated with this article can be found in the online version at [doi:10.1016/j.jpmed.2023.11.005](https://doi.org/10.1016/j.jpmed.2023.11.005).

References

1. Chen YN, Hsu JF, Chu SM, Lai MY, Lin C, Huang HR, et al. Clinical and microbiological characteristics of neonates with candidemia and impacts of therapeutic strategies on the outcomes. *J Fungi*. 2022;8:465.
2. Weimer KED, Smith PB, Puia-Dumitrescu M, Aleem S. Invasive fungal infections in neonates: a review. *Pediatr Res*. 2022;91:404–12.
3. Sousa RA, Diniz LM, Marinho FL, Rezende LG, Carellos EM, Romnelli RM. Risk factors for candidemia in neonates: systematic review and meta-analysis. *J Neonatal Nursing*. 2022;28:83–92.
4. Walsh TJ, Katragkou A, Chen T, Salvatore CM, Roilides E. Invasive candidiasis in infants and children: recent advances in epidemiology, diagnosis, and treatment. *J Fungi*. 2019;5:11.
5. Salazar GE, Campbell JR. Trichosporonosis, an unusual fungal infection in neonates. *Pediatr Infect Dis J*. 2002;21:161–5.

6. Menezes RP, Melo SG, Oliveira MB, Silva FF, Alves PG, Bessa MA, et al. Healthcare-associated infections in high-risk neonates: temporal trends in a national surveillance system. *Early Hum Dev.* 2021;158:105394.
7. Liu SH, Mitchell H, Nasser Al-Rawahi G. Epidemiology and associated risk factors for candidemia in a Canadian tertiary paediatric hospital: an 11-year review. *J Assoc Med Microbiol Infect Dis Can.* 2023;8:29–39.
8. Warris A, Pana ZD, Oletto A, Lundin R, Castagnola E, Lehrnbecher T, et al. Etiology and outcome of candidemia in neonates and children in Europe: an 11-year multinational retrospective study. *Pediatr Infect Dis J.* 2020;39:114–20.
9. Cook A, Ferreras-Antolin L, Adhisivam B, Ballot D, Berkley JA, Bernaschi P, et al. Neonatal invasive candidiasis in low- and middle-income countries: data from the NeoOBS study. *Med Mycol.* 2023;61:myad010.
10. da Silva CM, de Carvalho AM, Macêdo DP, Jucá MB, Amorim RJ, Neves RP. Candidemia in Brazilian neonatal intensive care units: risk factors, epidemiology, and antifungal resistance. *Braz J Microbiol.* 2023;54:817–25.
11. Tekin R, Dal T, Pirinccioglu H, Oygucu SE. A 4-year surveillance of device-associated nosocomial infections in a neonatal intensive care unit. *Pediatr Neonatol.* 2013;54:303–8.
12. Denkel LA, Maechler F, Schwab F, Kola A, Weber A, Gastmeier P, et al. Infections caused by extended-spectrum β -lactamase-producing Enterobacterales after rectal colonization with ESBL-producing *Escherichia coli* or *Klebsiella pneumoniae*. *Clin Microbiol Infect.* 2020;26:1046–51.
13. Arantes A, Carvalho E da S, Medeiros EA, Farhat CK, Mantese OC. Uso de diagramas de controle na vigilância epidemiológica das infecções hospitalares. *Rev Saúde Pública.* 2003;37:768–74.
14. CDC. Principles of epidemiology | Lesson 3 - Section 3. 2021 [cited 2023 May 24]. Available from: <https://www.cdc.gov/csels/dsepd/ss1978/lesson3/section3.html>
15. Suleyman G, Alangaden GJ. Nosocomial fungal infections: epidemiology, infection control, and prevention. *Infect Dis Clin North Am.* 2021;35:1027–53.
16. Piqueras A, Ganapathi L, Carpenter JF, Rubio T, Sandora TJ, Flett KB, et al. Trends in pediatric candidemia: epidemiology, anti-fungal susceptibility, and patient characteristics in a children's hospital. *J Fungi.* 2021;7:78.
17. Lee WJ, Hsu JF, Lai MY, Chiang MC, Lin HC, Huang HR, et al. Factors and outcomes associated with candidemia caused by non-albicans *Candida* spp versus *Candida albicans* in children. *Am J Infect Control.* 2018;46:1387–93.
18. Menezes R de P, Ferreira MI, Silva NB, Silva JA, de Araújo LB, et al. Vancomycin and cephalosporin use as a first choice of antimicrobial therapy in neonatal intensive care unit: impact on a late-onset sepsis. *Intern J Dev Res.* 2019;9:29669–74.
19. Benjamin Jr DK, Stoll BJ, Gantz MG, Walsh MC, Sánchez PJ, Das A, et al. Neonatal candidiasis: epidemiology, risk factors, and clinical judgment. *Pediatrics.* 2010;126:e865–73.
20. Noni M, Stathi A, Vaki I, Velegraki A, Zachariadou L, Michos A. Changing epidemiology of invasive candidiasis in children during a 10-year period. *J Fungi.* 2019;5:19.
21. Fu J, Wang X, Wei B, Jiang Y, Chen J. Risk factors and clinical analysis of candidemia in very-low-birth-weight neonates. *Am J Infect Control.* 2016;44:1321–5.
22. Chen J, Jiang Y, Wei B, Ding Y, Xu S, Qin P, et al. Epidemiology of and risk factors for neonatal candidemia at a tertiary care hospital in western China. *BMC Infect Dis.* 2016;16:700.
23. Dzierzanowska-Fangrat K, Romanowska E, Gryniwicz-Kwiatkowska O, Migdał M, Witulska K, Ryżko J, et al. Candidaemia in a Polish tertiary paediatric hospital, 2000 to 2010. *Mycoses.* 2014;57:105–9.
24. Fu J, Ding Y, Wei B, Wang L, Xu S, Qin P, et al. Epidemiology of *Candida albicans* and non-*C. albicans* of neonatal candidemia at a tertiary care hospital in western China. *BMC Infect Dis.* 2017;17:329.
25. Urzedo JE, Levenhagen MM, Pedroso RS, Abdallah VO, Sabino SS, Brito DV. Nosocomial infections in a neonatal intensive care unit during 16 years: 1997-2012. *Rev Soc Bras Med Trop.* 2014;47:321–6.
26. Alves PG, Melo SG, Bessa MA, Brito MO, Menezes RP, Araújo LB, et al. Risk factors associated with mortality among patients who had candidemia in a university hospital. *Rev Soc Bras Med Trop.* 2020;53:e20190206.
27. Rajeshwari R, Vyasam S, Chandran J, Porwal S, Ebenezer K, Thokchom M, et al. Risk factors for *Candida* infection among children admitted to a pediatric intensive care unit in a tertiary care centre in Southern India. *Indian J Crit Care Med.* 2022;26:717–22.
28. Yakut N, Kepenekli E, Ergenc Z, Baran E, Cerikcioglu N. Antifungal susceptibility, species distribution and risk factors associated with mortality of invasive candidiasis in children in Turkey: a six-year retrospective, single-centre study. *J Mycol Med.* 2021;31:101082. <https://doi.org/10.1016/j.mycmed.2020.101082>.
29. Aslan N, Yildizdas D, Alabaz D, Horoz OO, Yontem A, Kocabas E. Invasive *Candida* infections in a pediatric intensive care unit in Turkey: evaluation of an 11-year period. *J Pediatr Intensive Care.* 2020;9:21–6.
30. Pappas PG, Kauffman CA, Andes DR, Clancy CJ, Marr KA, Ostrosky-Zeichner L, et al. Clinical practice guideline for the management of candidiasis: 2016 update by the infectious diseases society of America. *Clin Infect Dis.* 2016;62:e1–50.